

Henry's Fork Angler Access

Below Mesa Falls

Table of Contents

29. [Grandview Campground](#)
30. [Warm River Campground](#)
31. [Stone Bridge](#)
32. [Fisherman's Drive Jumpoff Canyon](#)
33. [Ashton Reservoir](#)
34. [Ashton Dam East](#)
34. [Ashton Dam West](#)
35. [Ora Bridge](#)
36. [Vernon Bridge](#)
37. [Chester Dam](#)
38. [Chester Wetlands WMA](#)
39. [Fun Farm Bridge](#)
40. [Del Rio Bridge](#)
41. [Clyde Keefer City Park](#)
42. [St. Anthony Greenway Bridge St](#)
43. [St. Anthony Greenway Cemetery](#)
44. [St. Anthony Railroad Trestle](#)
45. [Red Road Bridge](#)
46. [Warm Slough](#)
47. [Beaver Dick Park](#)

Grandview Campground

Latitude	44.17119688
Longitude	-111.3164045
Owner	Caribou-Targhee National Forest
Boat Ramp	Yes (Unpaved Boatslide)
Use	Put-In (Raft Only)
Float Distance to	Stonebridge, 6.5 Miles
Parking	5
Trashcans	Campers Only
Restroom	At Campground
Room to Turn Trailer?	Yes

[Google Maps Link](#)







Warm River Campground

Latitude	44.1193622
Longitude	-111.3150566
Owner	Caribou-Targhee National Forest
Boat Ramp	No
Use	Wading
Parking	15+
Trashcans	Campers Only
Restroom	In Campsite
Room to Turn Trailer?	No

[Google Maps Link](#)





Stone Bridge

Latitude	44.11038471
Longitude	-111.3373994
Owner	Fremont County
Boat Ramp	Yes (Gravel)
Use	Boating Put-In & Take-Out, Wading
Float Distance to	Jumpoff Canyon, 6 Miles
	Ashton Reservoir, 7 Miles
Parking	20+ (1 Handicap)
Trashcans	Yes
Restroom	Yes
Room to Turn Trailer?	Yes

[Google Maps Link](#)







Fisherman's Drive Jumpoff Canyon

Latitude	44.10844859
Longitude	-111.438084
Owner	Fremont County
Boat Ramp	Yes (Concrete Block)
Use	Boating Put-In & Take Out, Wading
Float Distance to	Ashton Reservoir, 1 Mile
Parking	20+
Trashcans	No
Restroom	Yes
Room to Turn Trailer?	Yes

[Google Maps Link](#)







Ashton Reservoir

[Back to Top](#)

Latitude	44.11158685
Longitude	-111.4554979
Owner	PacifiCorp
Boat Ramp	Yes (Paved)
Use	Boating, Wading
Parking	20+
Trashcans	Yes
Restroom	Yes
Room to Turn Trailer?	Yes

[Google Maps Link](#)









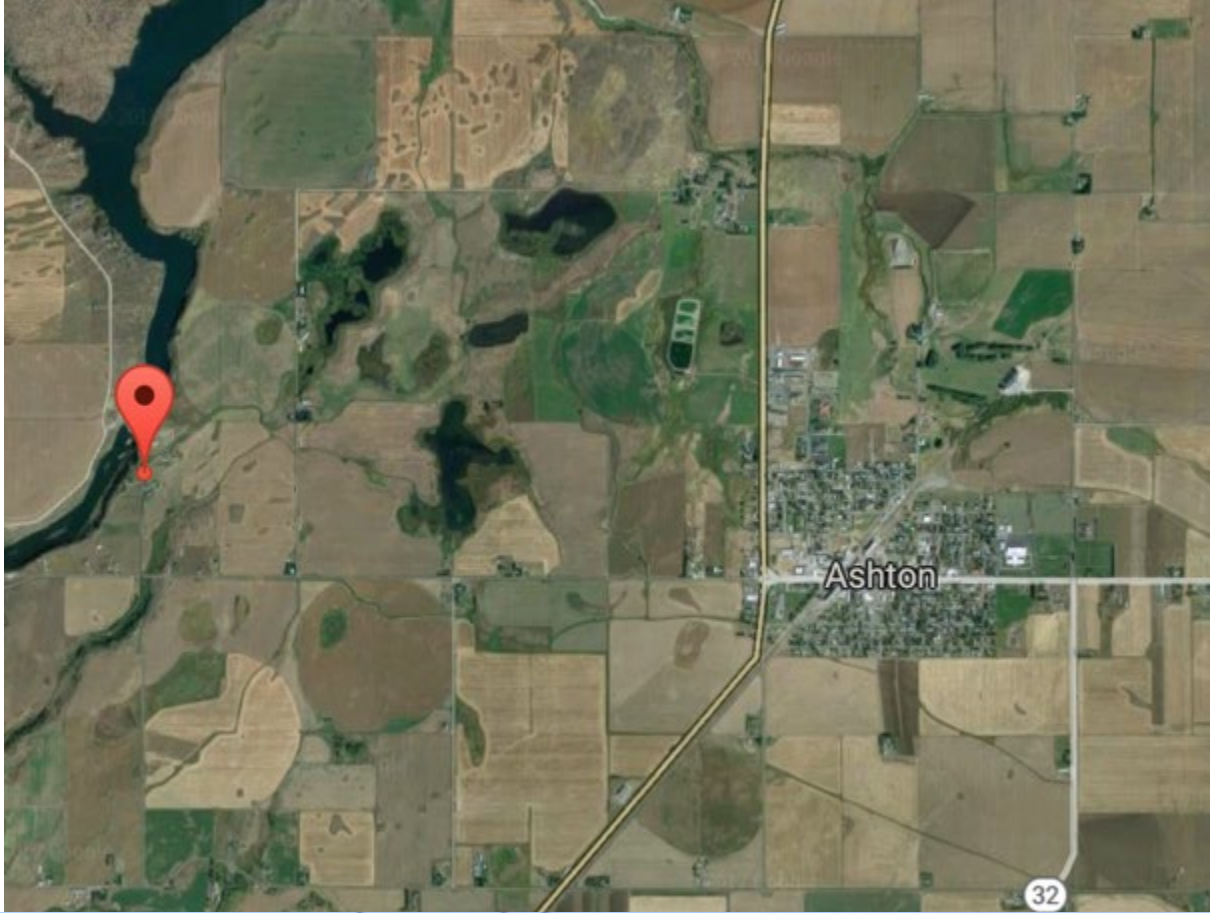
Ashton Dam East

[Back to Top](#)

Latitude	44.076323
Longitude	-111.496181
Owner	PacifiCorp
Boat Ramp	No
Use	Wading
Parking	10
Trashcans	No
Restroom	No
Room to Turn Trailer?	Yes

[Google Maps Link](#)







Ashton Dam West

[Back to Top](#)

Latitude	44.078585
Longitude	-111.498169
Owner	PacifiCorp
Boat Ramp	No
Use	Wading
Parking	10
Trashcans	No
Restroom	No
Room to Turn Trailer?	Yes

[Google Maps Link](#)





Ora Bridge

Latitude	44.07006336
Longitude	-111.5102659
Owner	Fremont County
Boat Ramp	Yes (Concrete Block)
Use	Boating Put-In, Wading
Float Distance to	Vernon Bridge, 3.5
	Chester Dam, 5.5
Parking	10+
Trashcans	No
Restroom	Yes
Room to Turn Trailer?	Yes

[Google Maps Link](#)







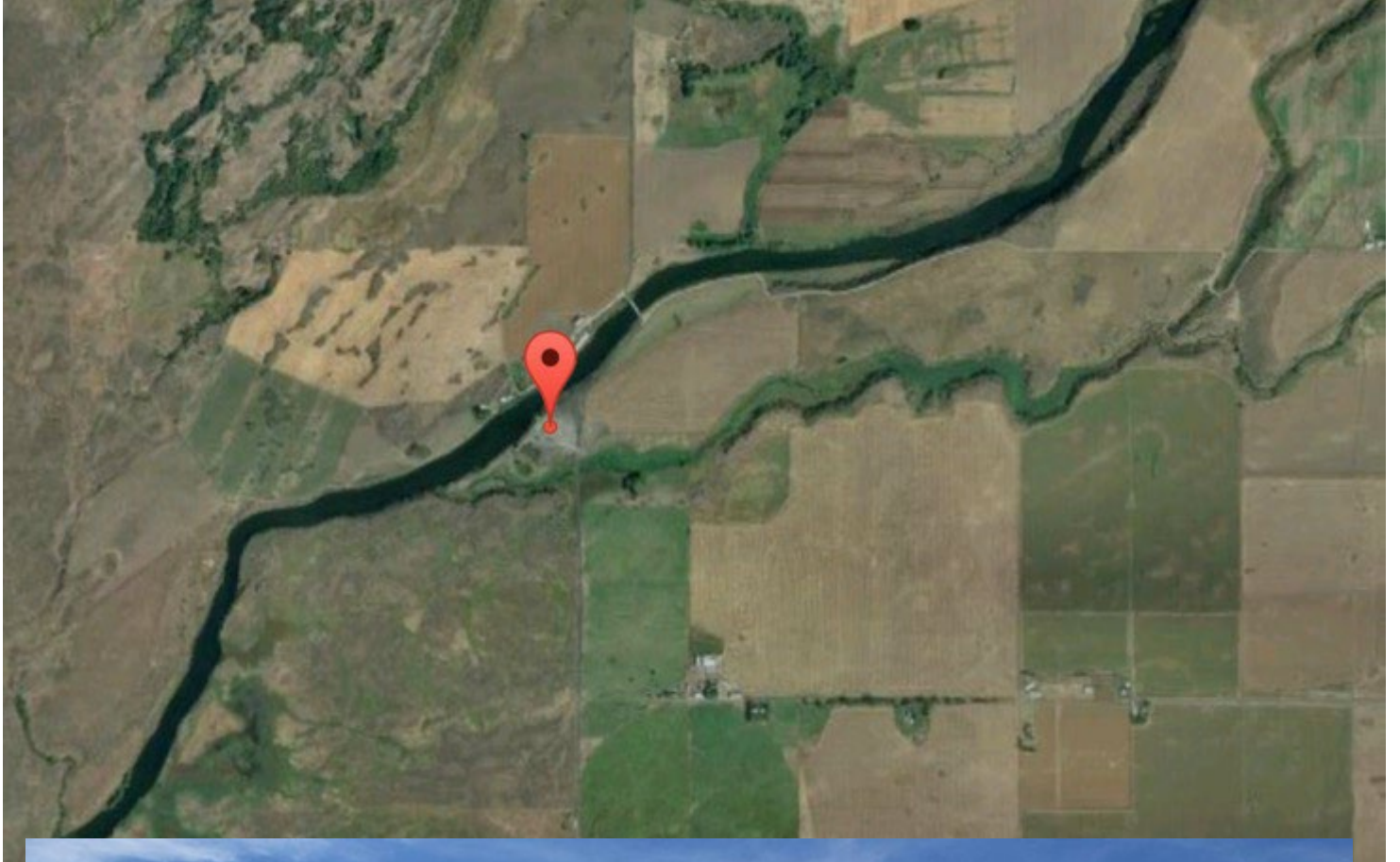
Vernon Bridge

[Back to Top](#)

Latitude	44.05121592
Longitude	-111.5402016
Owner	Fremont County
Boat Ramp	Yes (Concrete Block)
Use	Boating Put-In & Take-Out, Wading
Float Distance to	Chester Dam, 3.5 Miles
Parking	15+
Trashcans	No
Restroom	Yes
Room to Turn Trailer?	Yes

[Google Maps Link](#)







Chester Dam

Latitude	44.017922
Longitude	-111.582377
Owner	Fremont-Madison Irrigation District
Boat Ramp	Yes (Concrete Block) **Above and Below Dam**
Use	Boating Put-In & Take Out, Wading
Float Distance to	Fun Farm Bridge, 3.5 Miles
Parking	20+
Trashcans	Yes
Restroom	Yes
Room to Turn Trailer?	Yes

[Google Maps Link](#)









Chester Wetlands WMA

Latitude	43.982657
Longitude	-111.623976
Owner	Idaho Department of Fish & Game
Boat Ramp	No
Use	Wading
Parking	10
Trashcans	No
Restroom	Yes
Room to Turn Trailer?	Yes

[Google Maps Link](#)







Fun Farm Bridge

[Back to Top](#)

Latitude	43.98241624
Longitude	-111.6239837
Owner	Fremont County
Boat Ramp	Yes (Paved)
Use	Boating Take-Out, Wading
Parking	20+
Trashcans	No
Restroom	Yes
Room to Turn Trailer?	Yes

[Google Maps Link](#)







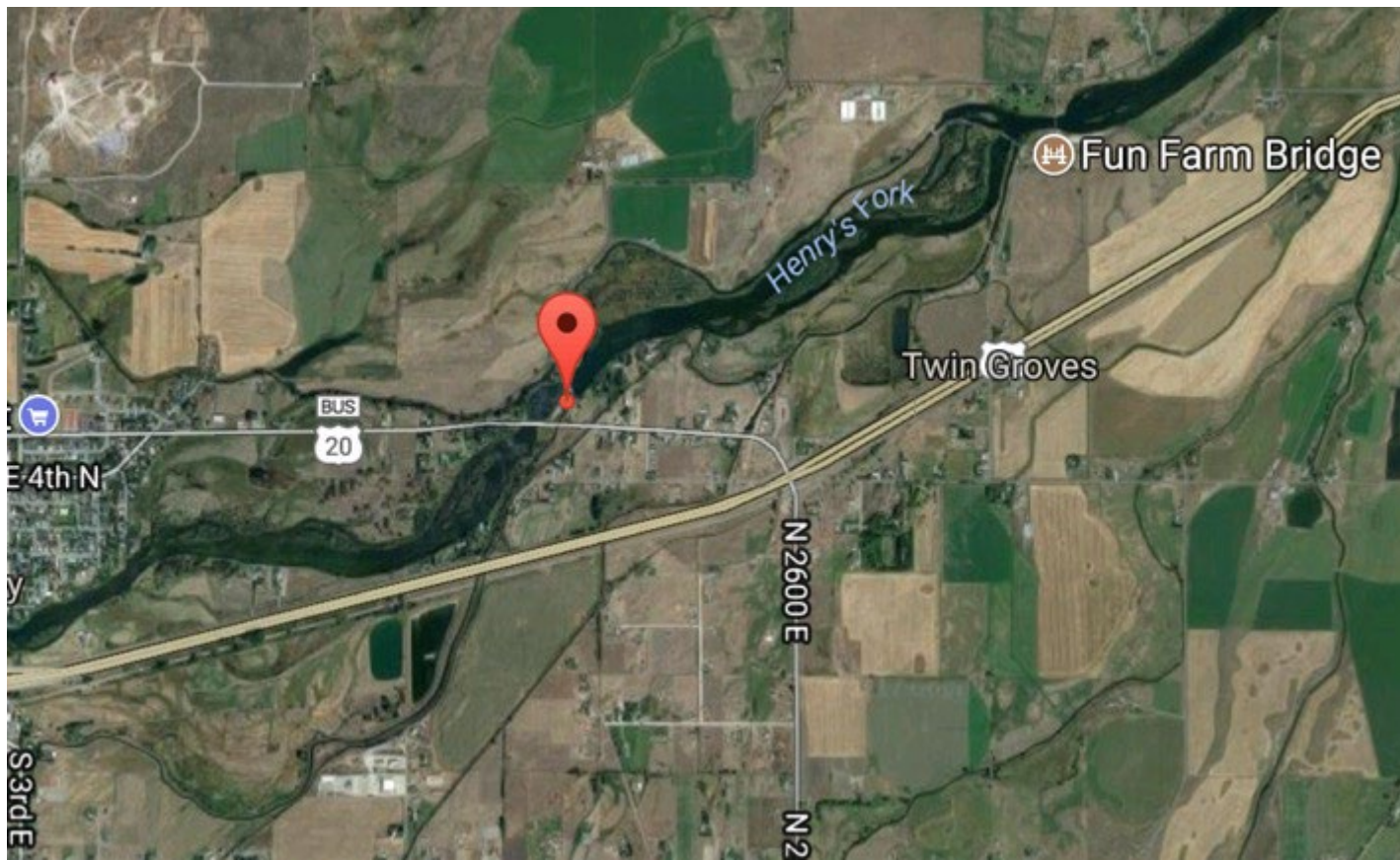
[Back to Top](#)

Del Rio Bridge

Latitude	43.973034
Longitude	-111.649916
Owner	Fremont County
Boat Ramp	No
Use	Wading
Parking	10+
Trashcans	No
Restroom	Yes
Room to Turn Trailer?	Yes

[Google Maps Link](#)



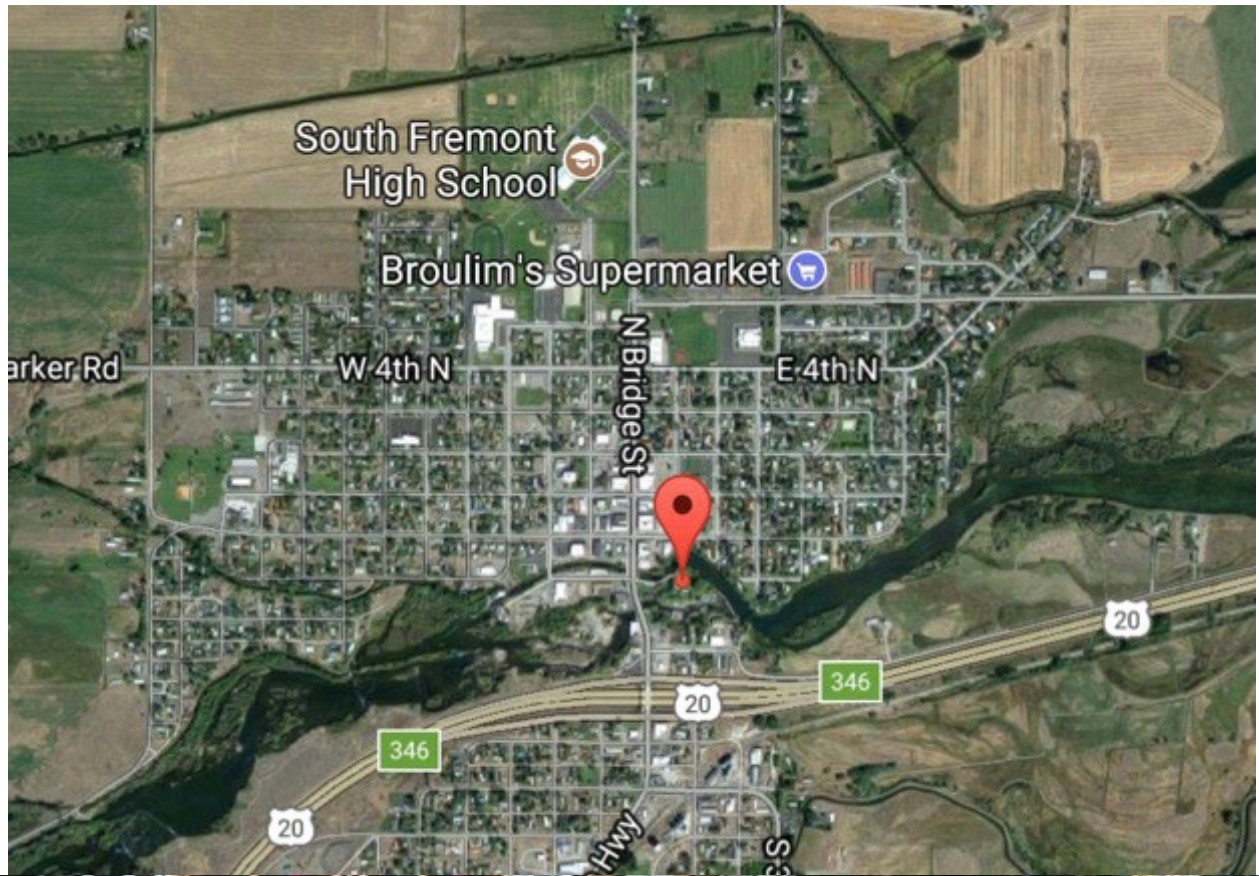


Clyde Keefer City Park

Latitude	43.96540013
Longitude	-111.6809275
Owner	City of St. Anthony
Boat Ramp	No
Use	Wading
Parking	20+
Trashcans	Yes
Restroom	Yes
Room to Turn Trailer?	No

[Google Maps Link](#)







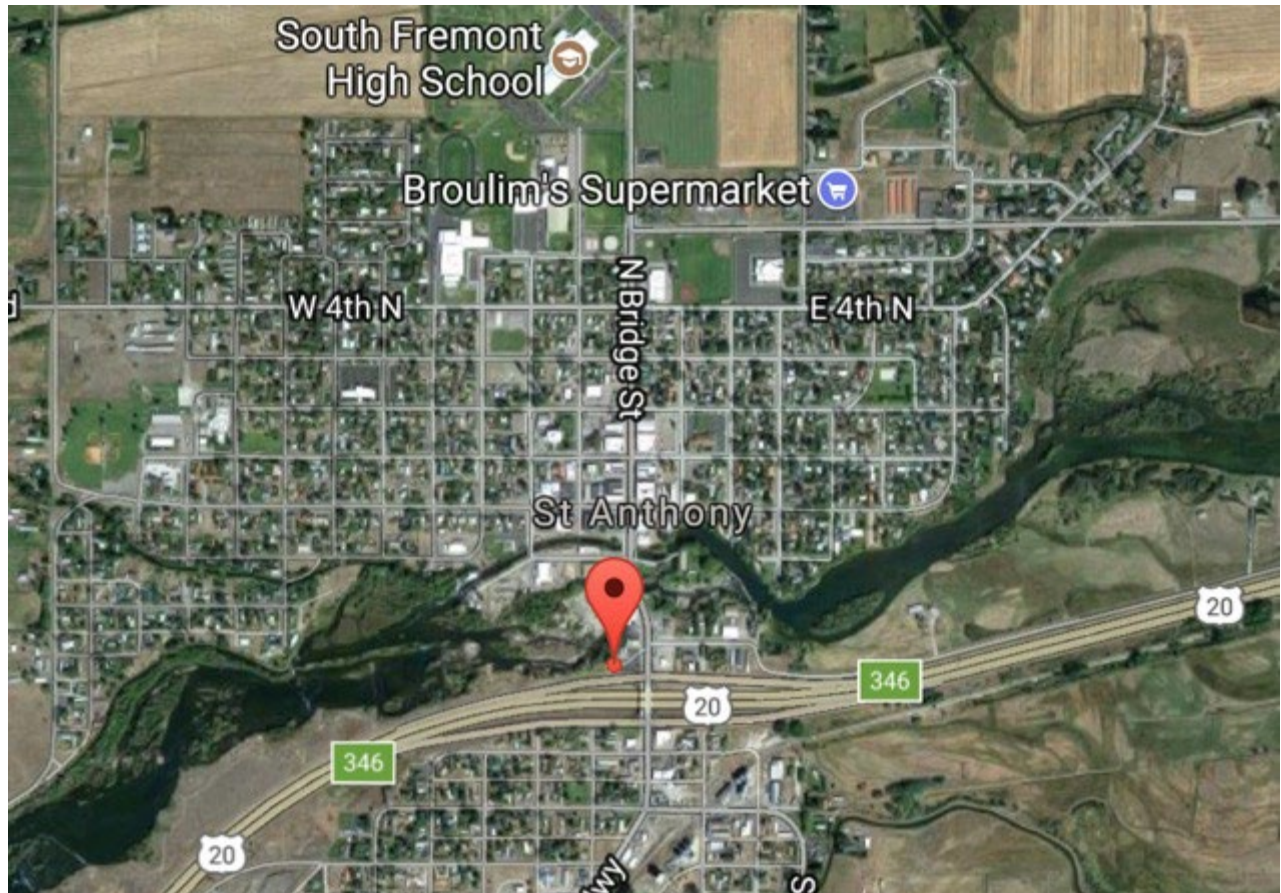


St. Anthony Greenway Bridge St.

Latitude	43.96336829
Longitude	-111.6829539
Owner	Idaho Department of Transportation
Boat Ramp	No
Use	Wading (Hike-in)
Parking	5
Trashcans	No
Restroom	Yes
Room to Turn Trailer?	No

[Google Maps Link](#)







St. Anthony Greenway Cemetery

Latitude	43.958555
Longitude	-111.703389
Owner	Riverview Cemetery District
Boat Ramp	No
Use	Wading
Parking	15+
Trashcans	No
Restroom	Yes
Room to Turn Trailer?	No

[Google Maps Link](#)





St. Anthony Railroad Trestle

Latitude	43.94958433
Longitude	-111.7174957
Owner	Bureau of Land Management
Boat Ramp	Yes (Unpaved)
Use	Wading
Float Distance to	Red Road Bridge, 5 Miles
Parking	15+
Trashcans	No
Restroom	No
Room to Turn Trailer?	Yes

[Google Maps Link](#)



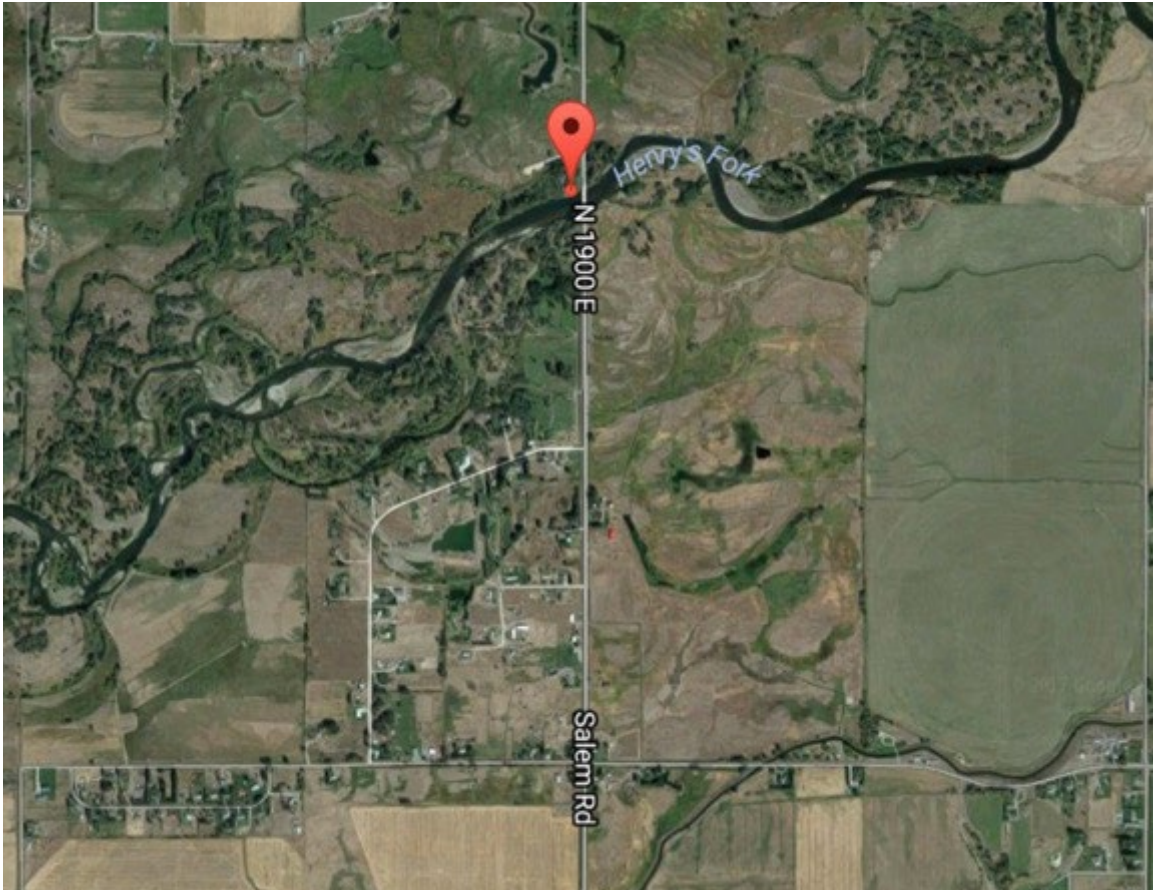


Red Road Bridge

Latitude	43.92751168
Longitude	-111.7783238
Owner	Bureau of Land Management
Boat Ramp	Yes (Concrete Block)
Use	Boating, Wading
Float Distance to	Warm Slough, 9 Miles
Parking	10+
Trashcans	No
Restroom	Yes
Room to Turn Trailer?	Yes

[Google Maps Link](#)







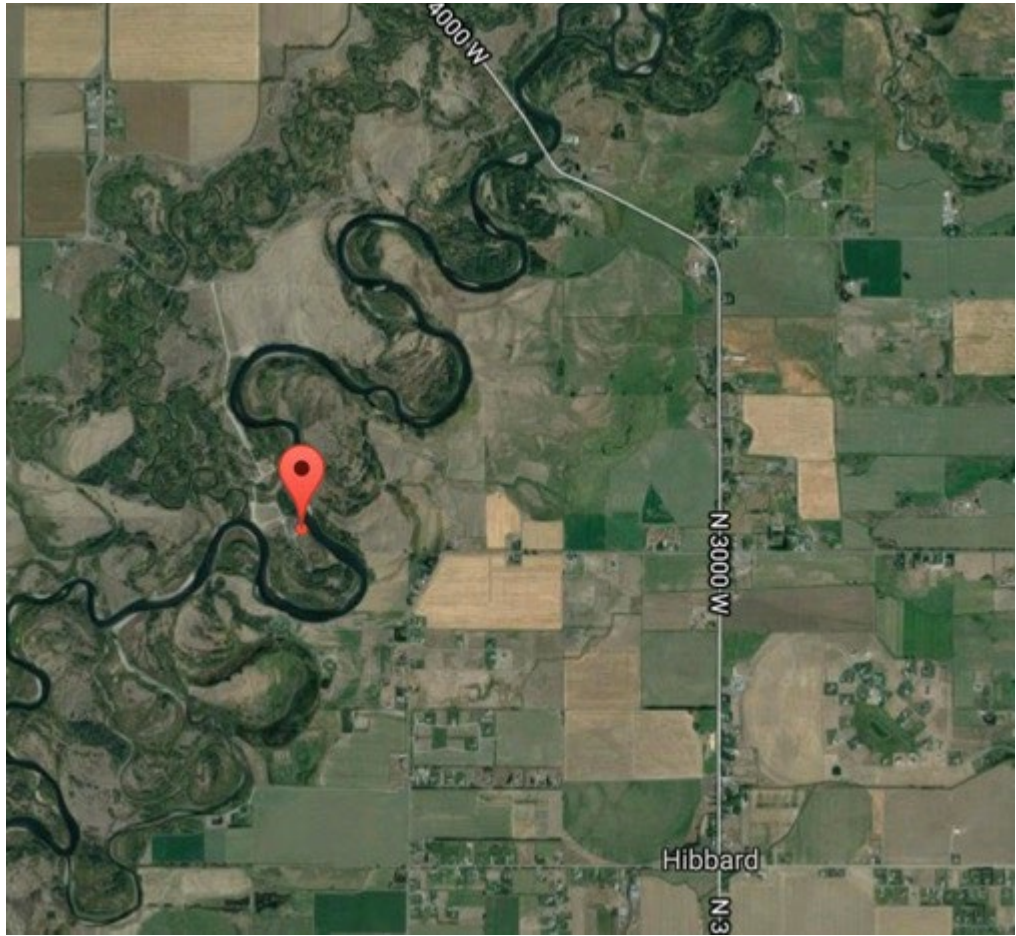


Warm Slough

Latitude	43.87046404
Longitude	-111.8647293
Owner	Idaho Department of Fish & Game
Boat Ramp	Yes (Paved)
Use	Boating, Wading
Float Distance to	Beaver Dick Park, 7 Miles
Parking	60+
Trashcans	No
Restroom	Yes
Room to Turn Trailer?	Yes

[Google Maps Link](#)







Beaver Dick Park

[Back to Top](#)

Latitude	43.825687
Longitude	-111.906126
Owner	Madison County
Boat Ramp	Yes (Paved)
Use	Boating, Wading, Camping
Parking	20+
Trashcans	No
Restroom	Yes
Room to Turn Trailer?	Yes

[Google Maps Link](#)





